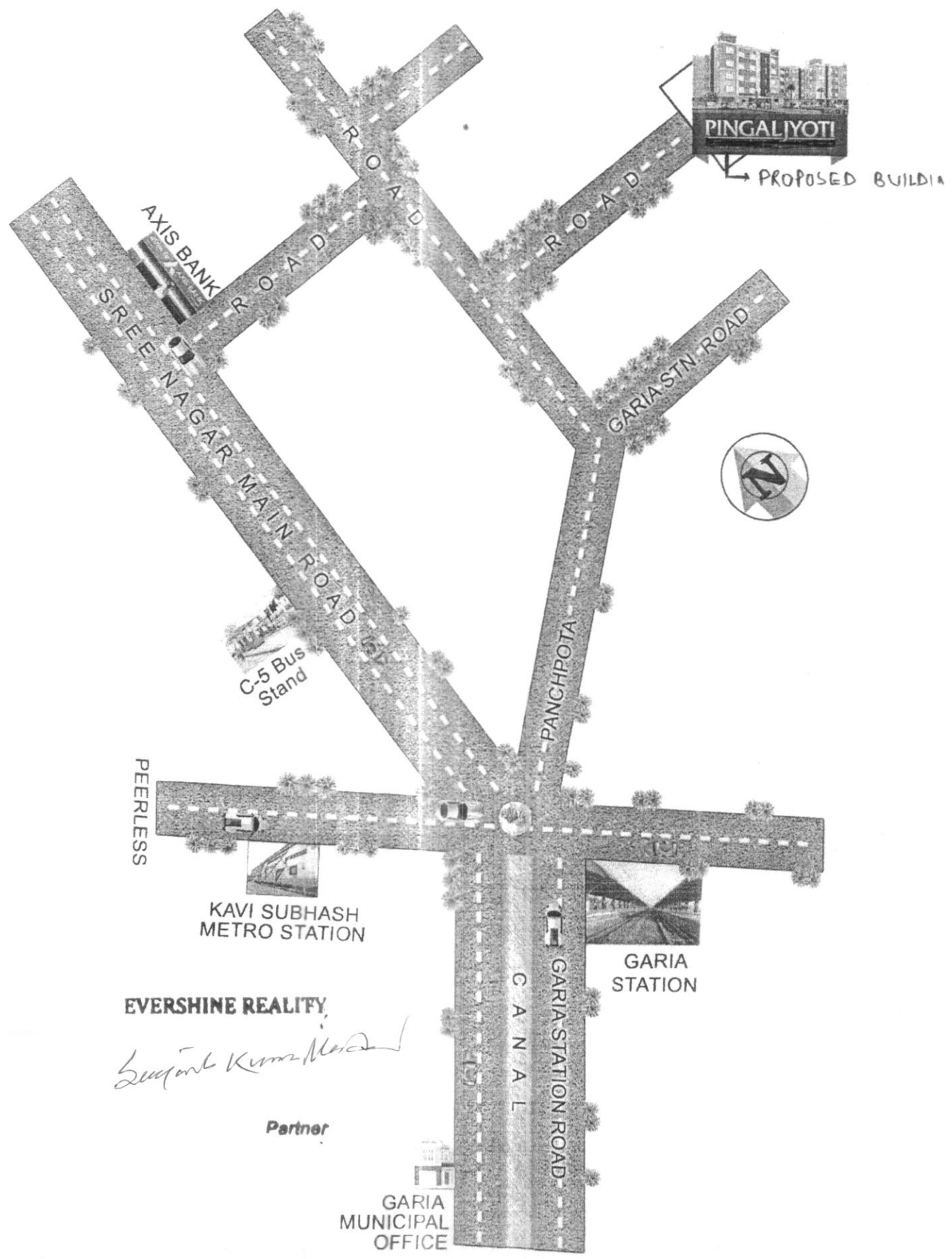


# LOCATION MAP



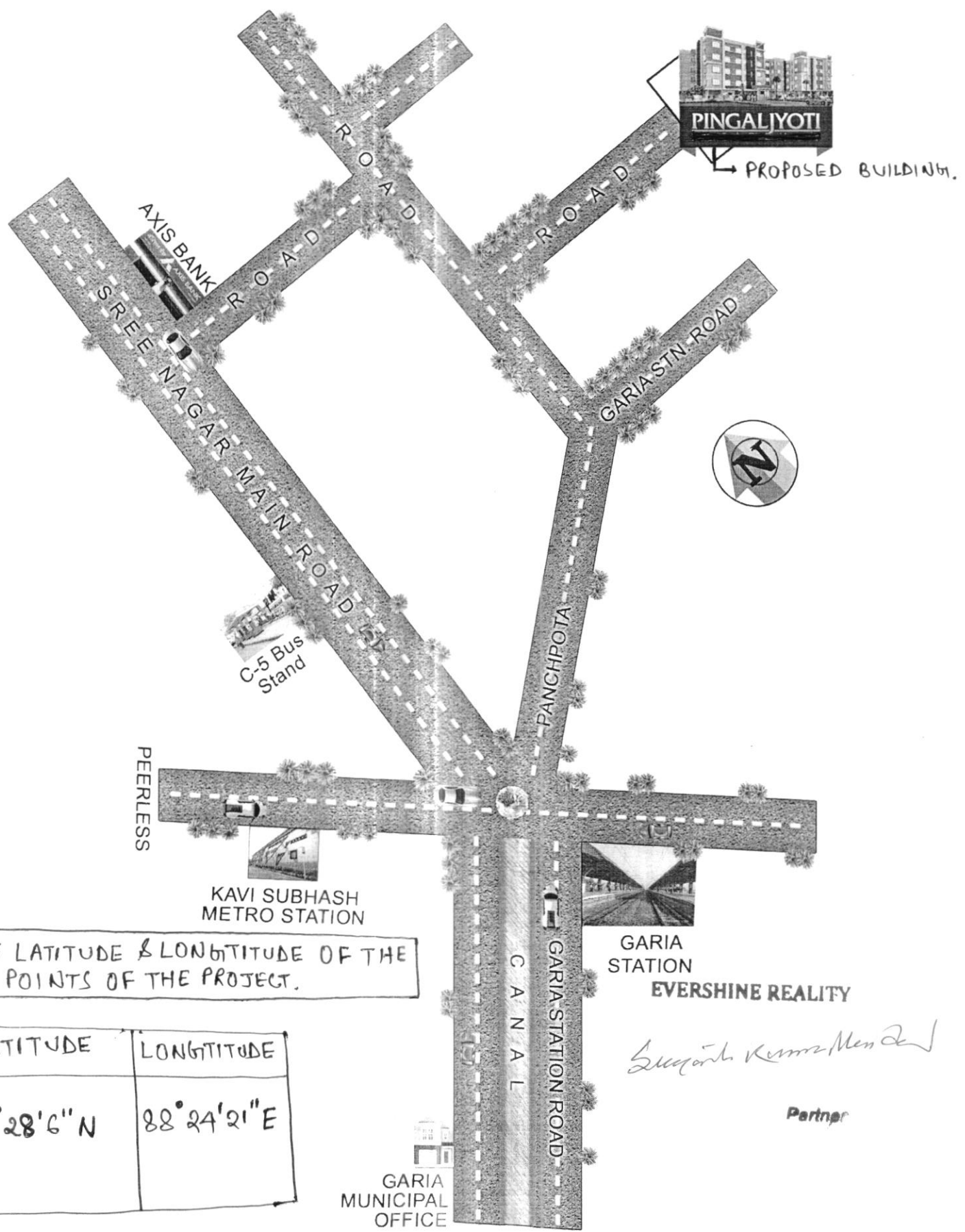
**EVERSHINE REALTY**

*Signature*

Partner

GARIA MUNICIPAL OFFICE

# LOCATION MAP



THE LATITUDE & LONGITUDE OF THE END POINTS OF THE PROJECT.

LATITUDE	LONGITUDE
22°28'6" N	88°24'21" E

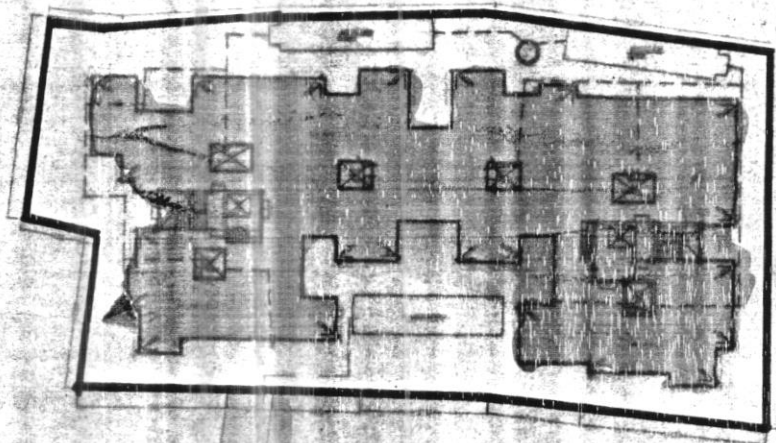
GARIA STATION  
EVERSHINE REALITY

*Sudip Kumar Menon*

Partner



NORTH



**SITE PLAN**  
(SCALE - 1:600)

EVERSHINE REALTY

*Suzanne K. Kimm, M.S., D.S.*

Partner

